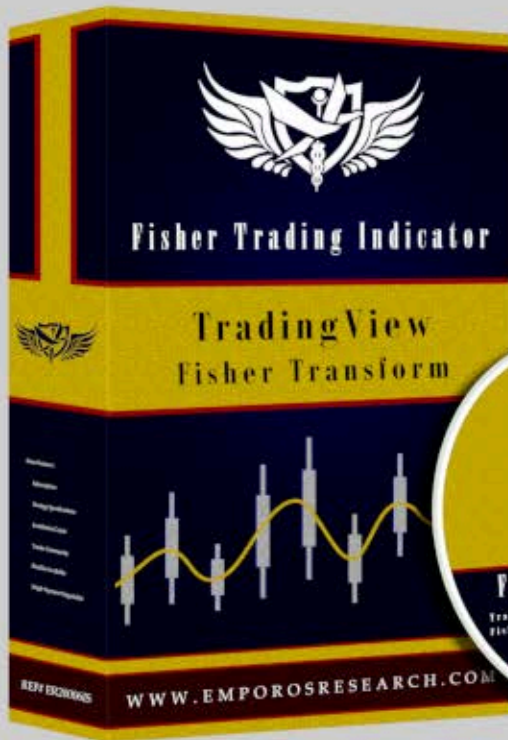




Fisher Trading Indicator



\$150 Each Month

- For TradingView
- Mainly Price Action
- In-Depth Product Guides
- Indicator Asset Screener
- Members Access on EchoFin

Strategy Guide on 4th Page

Fisher is composed of 2 components: Fisher Base -&- Fisher S1

Subscribe to the Fisher Indicator for \$150 each month. If you would like to make a one time payment please contact our sales department.

Fisher Base & Fisher S1 combine to make the Fisher Trading Indicator.

The brochure includes the list, details, and illustrations of all the features.

The strategy guide shows simple ways to increase profits, and guides to your own solutions.

The components can be used separately. If you can build a better strategy utilizing just Fisher S1, then go for it. They will both be of great trading assistance...

WWW.EMPOROSRESEARCH.COM

Fisher S1



Fisher Base



Fisher





Fisher Features & Details

List of Features

- | | | | |
|------------------------------|--|---------------------------|--|
| Trading Panel | > Current Profit Max Profit Max Profit Level (Price At which Max Profit Occured) | Fisher SI Alerts | > Buy & Sell Visual Alerts Green & Red Labels |
| Fisher Base Alerts | > Buy & Sell Visual Alerts Green & Red Labels | Fisher Base Curve | > Track Bull or Bear Market Green For Bull Market Red For Bear Market |
| Fisher Base Modes | > 3 Color Modes Market , Dark , Light | Fisher SI Labels | > Modify Label Distance Many Zoom Levels |
| Fisher Base Pivots | > Market Pivotal Shifts Green Circles For Bull Market Red Circles For Bear Market | Fisher Base Levels | > 5 Main Levels 5 , 2.5 , 0 , -2.5 , -5 |
| Fisher SI Track Lines | > Track Past Signal Performance Faster Tracking , Gold Dotted Lines | | |

Trading Panel

- 1** CURRENT PROFIT amount shows red when the account is in loss , shows green when in profits .
- 2** Max Profit shows the maxium profit amount since the trading singal started .
- 3** Max Profit Level is the price mark that the max profit level reached .



Fisher SI Alerts

The "Buy Now" & "Sell Now" Signal Labels will alert when to enter the market .



Fisher BASE Alerts

The "Buy" and "Sell" Signal Labels will alert when to enter the market .



Fisher BASE Curve

Curve turns green during Bull Market , turns red during Bear Market .





Fisher Features & Details

Base Color Modes



SI Label Control

From the settings modify how close the Labels get to the trendline .

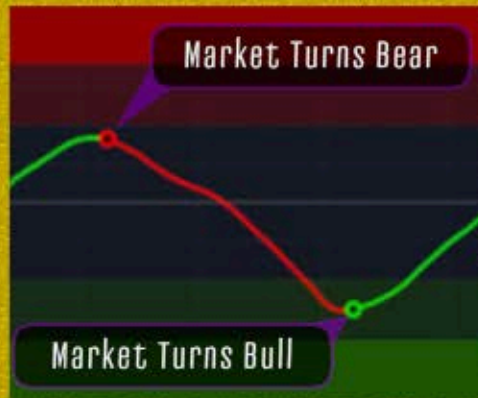
Base Market Pivots

The Market Pivots serve as a reminder of market directional switch.

Base Levels

The levels provide further control into market decisions .

The screenshot shows a settings window titled 'Fisher Base'. It has three tabs: 'Inputs', 'Style', and 'Visibility'. Under 'Inputs', there is a 'Buy & Sell Label Distance' set to '100 %'. At the bottom, there are 'Defaults', 'Cancel', and 'Ok' buttons.



SI Track Lines

Gold dotted lines will assist finding past signal performance faster .





Fisher Strategy Guide

Principals Of Trading

Wining Percentage :

The first variable that must be known when selecting a trading strategy is the percentage of how often a trade transaction experiences a profit.

Select A Wining Time Frame :

First find the time frame where the indicator can be applied to obtain a better wining percentage.

The Rule Of Thumb, trading must take place within a time frame that has experienced profits 3 to 4 consecutive times while utilizing Fisher. The rule will protect your account and provide good profits. After executing a good amount of trades, take some time to look into time frames where accomplishing profits require a bit more understanding of the indicator or of overall market behavior.

As experience is gained, it will be feasibly seen that it is more convenient to trade in high time frames like the Day, 4 Hour, 2 Hour, and 1 Hour. The lower time frames will proof more challenging, and it is necessary to make sure that alerts occur at Fisher Base Levels between 2.5 and 5 or -2.5 to -5. Entering the market within these levels increase the wining odds dramatically more for lower frames than for higher ones.

Strategy Optimization :

After understanding the time frame where wining happens well, the next step is to look into the frames that will require a bit more rules. If a trading style that requires more rules is not in your comfort zone, then just use the indicator as a screener. Apply Fisher to many market symbols and build a list of symbols with time frames where the Rule Of Thumb matches. With a long list of symbols that have been screened correctly, your desk will be filled with profitable trading executions.

Emporos Research provides training on Long, Swing, and Scalp Trading. Contact us for arrangements, or visit www.emporosreserach.com for more information.



WWW.EMPOROSRESEARCH.COM



EMPOROS RESEARCH

Fisher Trading Indicator



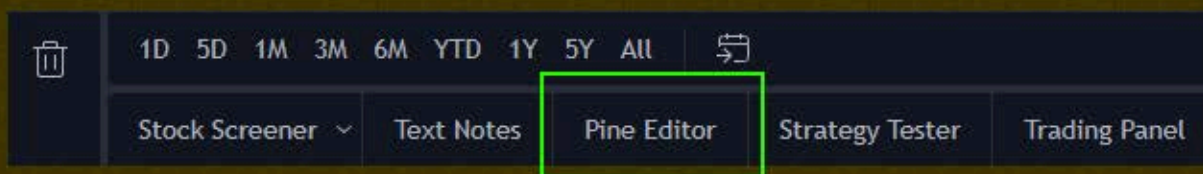
Fisher Installation Manual

TradingView Installation

Installation Notes :

Is a 3 page installation manual. The installation is for TradingView, they may be found at www.tradingview.com. There are a total of 18 steps or notes.

1) Click on PINE EDITOR



2) Click OPEN

3) Click on MY SCRIPTS

4) Click on Fisher Base from list or paste the new code

5) Click on ADD TO CHART , save the code if it is your first time

6) Click Again on OPEN

7) Click on MY SCRIPTS

8) Click on Fisher S1 from the list or paste the new code

9) Click on ADD TO CHART , save the code if it is your first time

10) Click on the LAYER icon , you may need to scroll down on the panel to find it





Fisher Installation Manual

TradingView Installation

11) Move Fisher S1 to the Top Position of the Layer Tree



12) Fisher S1 Layer proper position seen below



13) Fisher S1 is now seen on chart area, as seen above

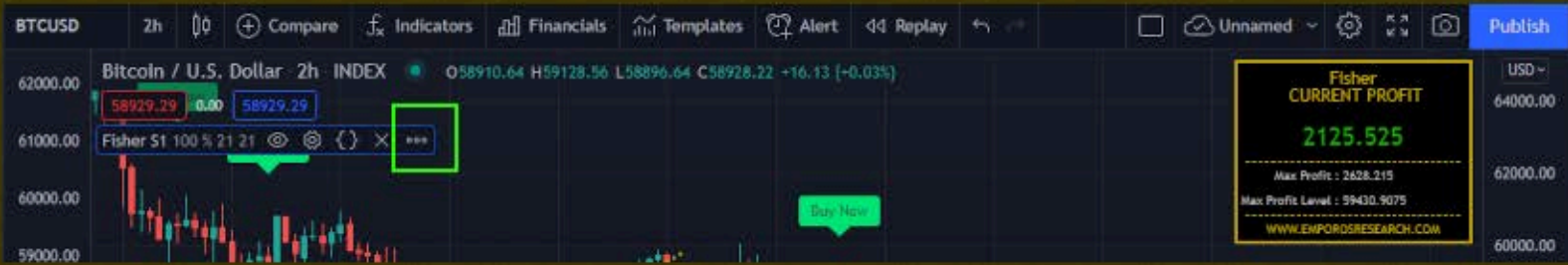
14) Fisher S1 Gold Dotted Lines are not attached to the charts, attaching next



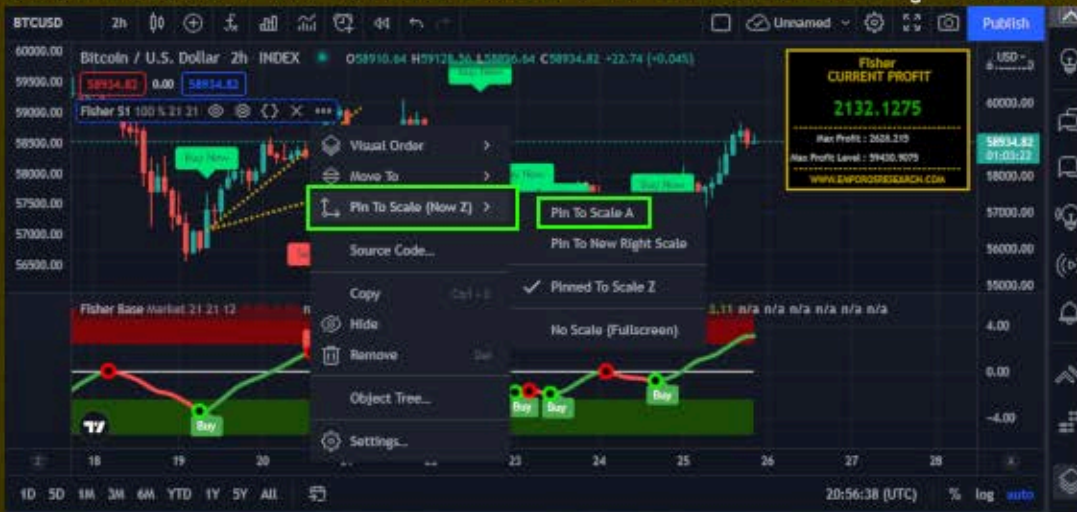
Fisher Installation Manual

TradingView Installation

15) Click on 3 DOTS ICON from SETTINGS



16) Click on PIN TO SCALE, and select a different SCALE, if PIN To SCALE A is available then CLICK on it, if the Gold Lines are still not attached correctly, then select a different SCALE, it will eventually attach after a few attempts.



17) Now the Gold Dotted Lines are correctly attached



18) Installation of Fisher complete. If you want to add a published indicator from another user to your chart, please request the How-To link from us.